

HAMPTON ACADEMY

Tuesday, November 3rd



AGENDA

- Review Project Status
 - Development of Conceptual Design
 - Selection of Construction Manager
 - Community Input
- Review Current Issues
- Review Community/Staff Survey Results
- Review Portsmouth MS Visit
- Review Hampton Space Program
- Review Site Analysis
- Review Site and Plan Diagram Options
- Open Discussion & Questions
- Construction Logistics



CURRENT ISSUES

- Site Arrival – Safety & Security – Multiple Entrances– Circulation
- Lack of Connection – Team Instruction
- Outdated Administrative, Guidance, Sped, OT & PT Spaces
- Poor Ventilation, Temperature Control, Sun Control & Insulation
- Outdated Shared Spaces (Café, Gym, Library, Music, Performance)
- Outdated Science Classrooms
- Poor Interior Circulation (Corridors, Stairs)
- Outdated Restrooms and Storage Spaces
- Outdated Plumbing & Electrical Infrastructure
- Handicapped Accessibility
- Limitations on Information Technology Infrastructure

TURNER
GROUP



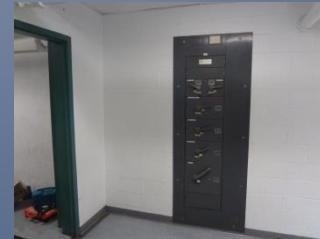
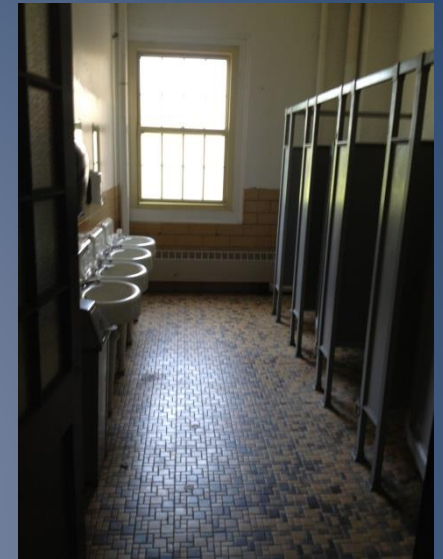
Hampton Academy Existing Conditions



Hampton Academy Existing Conditions



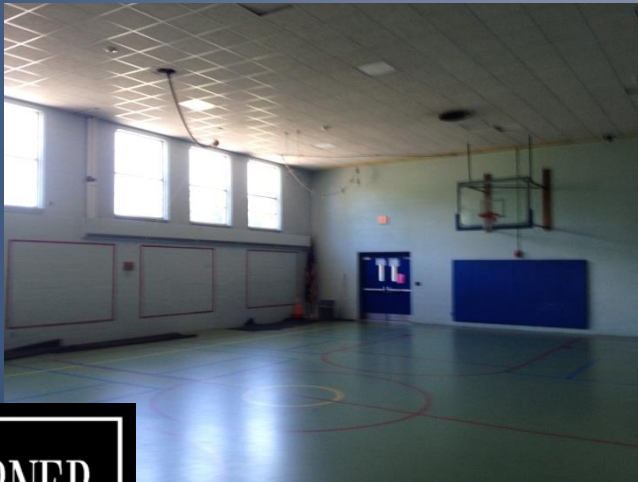
Hampton Academy Existing Conditions



Hampton Academy Existing Conditions



Hampton Academy Existing Conditions

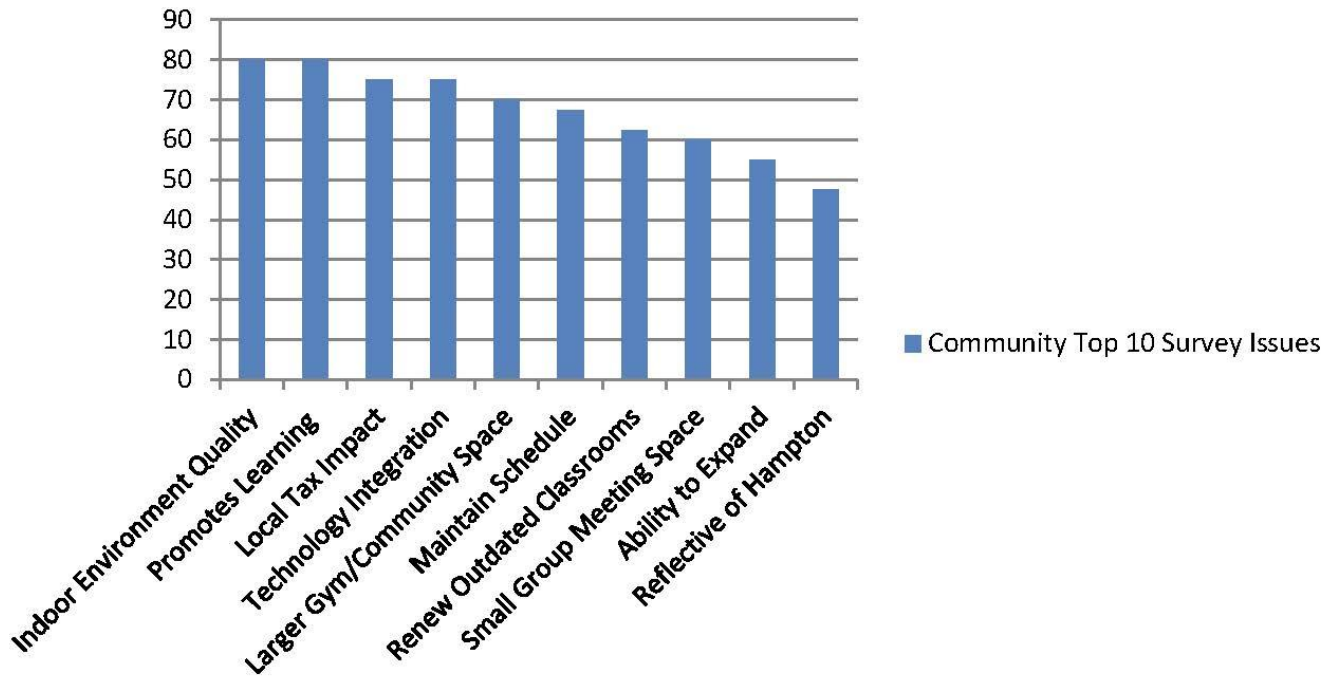


Hampton Academy Existing Conditions



COMMUNITY SURVEY

Community Top 10 Survey Issues



Improve Meeting Space	5	25	20	20	30
Improve Restrooms	5	25	15	20	40
Improve Storage Space	5	25	20	20	40
Improve Site Access and Circulation	5	5	20	20	40
Improve Drop Off & Pick Up	5	5	20	20	40
School as Center of the Community	5	25	20	20	40



COMMUNITY SURVEY

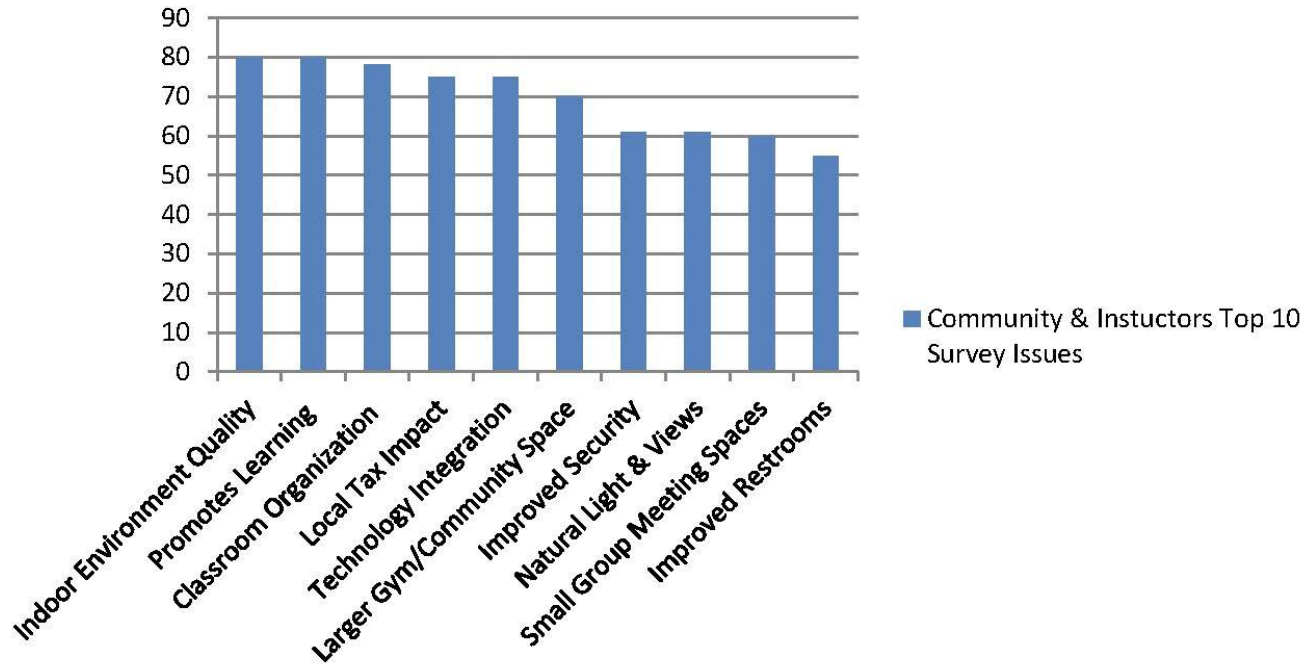
28. How strongly do you feel each of the following issues should be addressed?

Response: very strongly, strongly, somewhat, not strongly, not at all

29. How do you rate the following three areas of potential concern in your school building?

Response: excellent, good, fair, poor, very poor

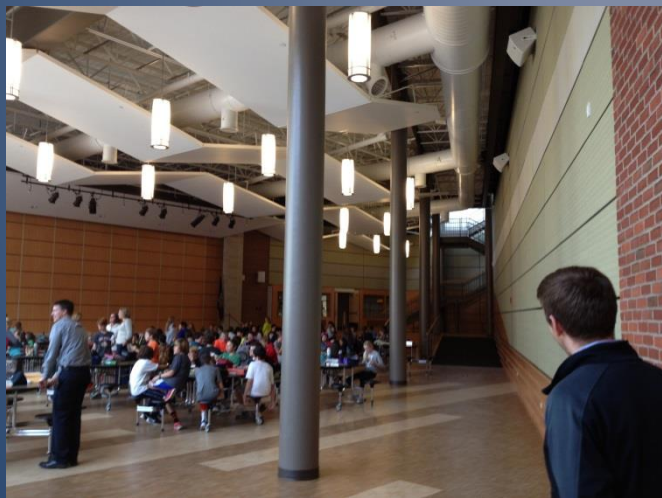
Community & Instuctors Top 10 Survey Issues



Issue	Very Strongly	Strongly	Somewhat	Not Strongly	Not at all
Indoor Environment Quality	15	25	35	20	5
Promotes Learning	10	30	40	15	5
Classroom Organization	10	25	35	25	5



PORTSMOUTH MIDDLE SCHOOL VISIT



PORTSMOUTH MIDDLE SCHOOL VISIT



PORTSMOUTH MIDDLE SCHOOL VISIT



PORTSMOUTH MIDDLE SCHOOL VISIT



HAMPTON ACADEMY SPACE PROGRAM

Hampton Academy Program
Hampton, NH
Project Number 4297

Nov 01, 2015
Page 1
The Turner Group

Space Summary

Program Spaces	Quantity	Occ Ea.	SF EA	DGSF
<u>Administration Office Suite</u>				
Main Office/ Waiting	1	8	400	400
Office	1	2	120	120
Principal's Office	1	4	200	200
Conference Room	1	10	240	240
Secure Storage	1	0	100	100
Unisex Restroom	1	1	64	64
				<u>724</u>
<u>Supplementary Administration Offices</u>				
Assistant Principal	1	2	150	150
Resource Officer	1	2	150	150
				<u>300</u>
<u>Guidance Office Suite</u>				
Waiting	1	3	150	150
Guidance Office	1	3	140	140
Psychologist Office	1	3	140	140
Guidance Secure Storage	1	0	100	100
Psychologist Secure Storage	1	0	100	100
				<u>630</u>
<u>School Nurse Office</u>				
Waiting	1	3	150	150
Office	1	1	140	140
Exam Room	1	2	120	120
Cot Room	1	3	260	260
Restroom	1	1	64	64
Secure Storage	1	0	40	40
Donation Storage	1	0	80	80
				<u>854</u>

HAMPTON ACADEMY SPACE PROGRAM

Hampton Academy Program
Hampton, NH
Project Number 4297

Nov 01, 2015
Page 2
The Turner Group

Team 6A

Classrooms	3	25	900	2,700
Classroom Storage	2	0	300	600
Science Classroom	1	25	1440	1,440
Team Room	1	10	300	300
				<hr/> 5,040

Team 6H

Classrooms	3	25	900	2,700
Classroom Storage	2	0	300	600
Science Classroom	1	25	1440	1,440
Team Room	1	10	300	300
				<hr/> 5,040

Team 7A/8A

Classrooms	3	25	900	2,700
Classroom Storage	2	0	300	600
Science Classroom	1	25	1440	1,440
Team Room	1	10	300	300
				<hr/> 5,040

Team 7H

Classrooms	3	25	900	2,700
Classroom Storage	2	0	300	600
Science Classroom	1	25	1440	1,440
Team Room	1	10	300	300
				<hr/> 5,040

Team 8H

Classrooms	3	25	900	2,700
Classroom Storage	2	0	300	600
Science Classroom	1	25	1440	1,440
Team Room	1	10	300	300
				<hr/> 5,040

HAMPTON ACADEMY SPACE PROGRAM

Hampton Academy Program
Hampton, NH
Project Number 4297

Nov 01, 2015
Page 3
The Turner Group

STEAM (other STEAM instuction spaces follow under other headings)

World Language Classrooms	2	25	900	1,800
STEM Classroom	1	25	900	900
				<u>2,700</u>

Special Education

Special Education Classrooms	3	12	900	2,700
Reading Intervention	1	8	800	800
Math Intervention	1	8	800	800
Occupational Therapy	1	6	900	900
Occupational Therapy Office	1	1	120	120
Physical Therapy	1	4	300	300
Physical Therapy Office	1	2	120	120
Physical Therapy Storage	1	0	120	120
Physical Therapy Restroom	1	1	100	100
Home School Coordinator Office	1	1	120	120
Home School Coordinator Storage	1	1	120	120
ELL Classroom	1	6	800	800
Conference Room	2	8	200	400
				<u>7,400</u>

Media Center

Library	1	40	1800	1,800
Library Classroom	1	25	800	800
Computer Room/ Maker Space	1	25	900	900
Library Office	1	1	120	120
Library Work Room	1	2	200	300
Audio Visual Storage	1	0	100	100
				<u>4,020</u>

HAMPTON ACADEMY SPACE PROGRAM

Hampton Academy Program
Hampton, NH
Project Number 4297

Nov 01, 2015
Page 4
The Turner Group

Art Instruction

Art Classroom	1	30	1200	1,200
Gallery Space	1	20	600	600
Art Storage	1	0	150	150
Kiln Room	1	0	150	150
				<u>2,100</u>

Music Instruction

Band Classroom	1	40	1400	1,400
Band Storage	1	0	200	200
Practice rooms	1	1	70	70
Music Computer Lab	1	2	70	70
Band Locker Space	1	0	40	40
Music/Choral Room	1	50	1400	1,400
				<u>3,180</u>

Computer Instruction

Computer Classroom	1	25	900	900
Sound Booth	1	2	100	100
Small Studio	1	5	100	100
Large Studio	1	10	400	400
				<u>1,500</u>

Performance Instruction

Auditorium	1	550	4400	4,400
Stage	1	100	1200	1,200
Stage Storage	1	0	400	400
Green Room	1	10	300	300
Production Booth	1	4	150	150
				<u>6,450</u>

Athletics Instruction

Gymnasium w/bleachers for 500, 6 basketball goals, volleyball sleeves	1	500	9000	9,000
Small Gymnasium	1	80	3600	3,600
Wrestling Mat Storage	1	0	600	600
Locker Rooms w/restroom & shower	2	20	440	880
Public Restrooms	2	4	300	600

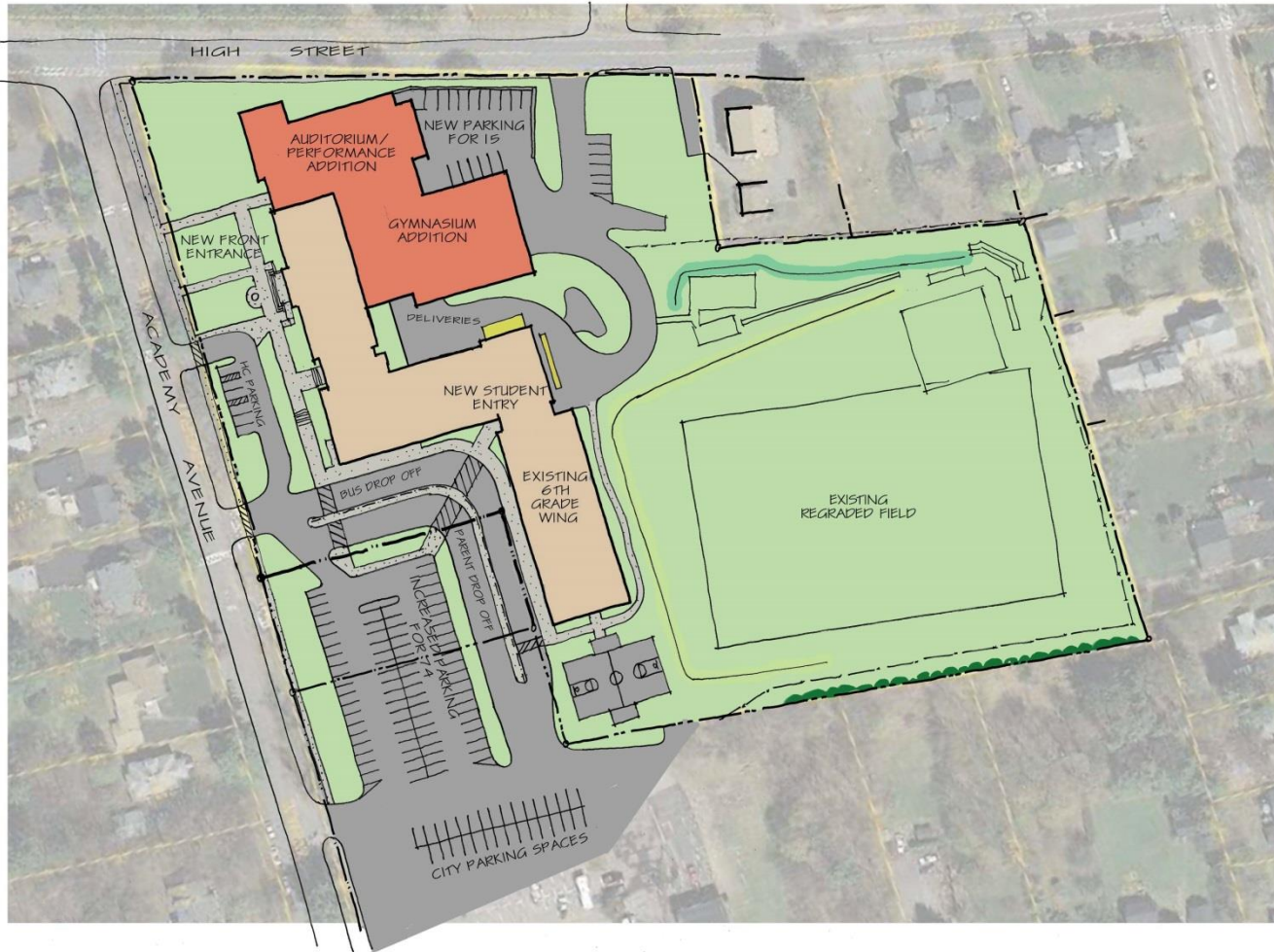
HAMPTON ACADEMY SPACE PROGRAM

Hampton Academy Program
Hampton, NH
Project Number 4297

Nov 01,2015
Page 5
The Turner Group

Athletic Director	1	2	200	200
Athletic Director Restroom	1	1	140	140
Team Locker Rooms w/restroom	2	20	300	600
Visiting Team Locker Rooms w/restroom	2	20	300	600
Health Classroom	1	25	900	900
Physical Education Storage	3	0	200	600
Team Storage	1	0	300	300
				<u>18,020</u>
<u>Cafeteria Support Spaces</u>				
Cafeteria	1	250	4500	4,500
Cafeteria Kitchen	1	8	600	600
Kitchen Dishwashing	1	1	150	150
Kitchen Storage	2	20	440	880
Kitchen Office	1	1	120	120
Kitchen Staff Locker Room	1	8	150	150
Kitchen Staff Restroom	1	1	64	64
Kitchen Storage	1	0	300	300
Cafeteria Storage	1	0	200	200
Vending Space	1	0	50	50
				<u>7,014</u>
<u>Facility Support Spaces</u>				
Instructional Storage Rooms	1	0	400	400
Mechanical Room	2	0	300	600
Information Technology Workroom	1	2	300	300
Information Technology Equipment Room	2	0	100	200
Maintenance Storage Rooms	1	2	400	400
				<u>2,000</u>
<u>Total</u>				
Total				<u>85,092 SF</u>
Plus 25% Gross Factor			Say	106,300 SF

SITE OPTION 1



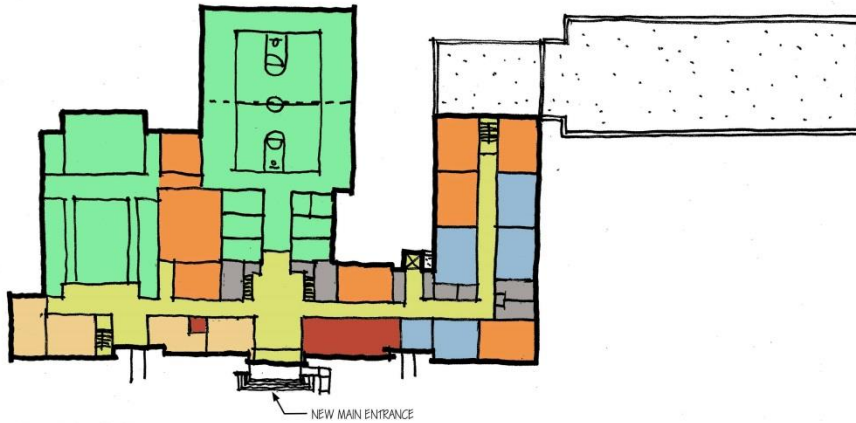
HAMPTON ACADEMY MIDDLE SCHOOL

SITE OPTION 1

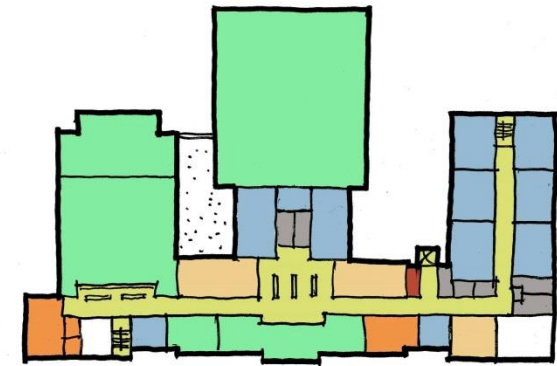
SCALE: N.T.S.
DATE: 10/26/15
SHEET NO: PROJECT: 426



PLAN DIAGRAM 1



FIRST FLOOR



SECOND FLOOR



LOWER LEVEL

LEGEND

- ADMINISTRATION
- CLASSROOMS & INSTRUCTION
- SPECIAL EDUCATION CENTERS
- EDUCATION SUPPORT AREAS
- SPECIAL CLASSROOMS
- MAINTENANCE & FACILITIES SUPPORT
- CIRCULATION

HAMPTON ACADEMY MIDDLE SCHOOL

CONCEPTUAL PLAN DIAGRAM OPTION 1

SCALE: 1" = 30'-0"
DATE: 11/03/15
PROJECT: 001



SITE OPTION 2



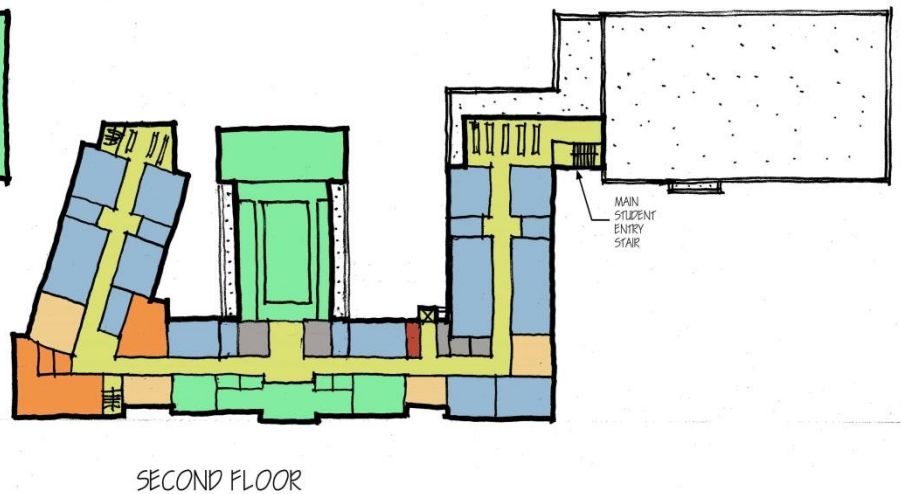
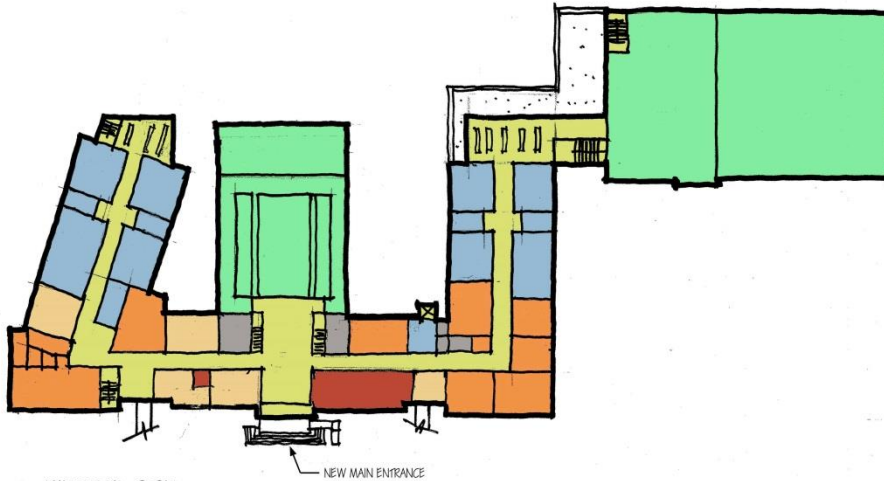
HAMPTON ACADEMY MIDDLE SCHOOL

SITE OPTION 2

SCALE: N.T.S.
DATE: 10/26/15
SHEET 001 PROJECT: 001



PLAN DIAGRAM 2



LEGEND

- ADMINISTRATION
- CLASSROOMS & INSTRUCTION
- SPECIAL EDUCATION CENTERS
- EDUCATION SUPPORT AREAS
- SPECIAL CLASSROOMS
- MAINTENANCE & FACILITIES SUPPORT
- CIRCULATION

HAMPTON ACADEMY MIDDLE SCHOOL

CONCEPTUAL PLAN DIAGRAM OPTION 2

SCALE: 1" = 30'-0"
DATE: 11/03/15
SHEET NO. PROJECT NO.



SITE OPTION 3



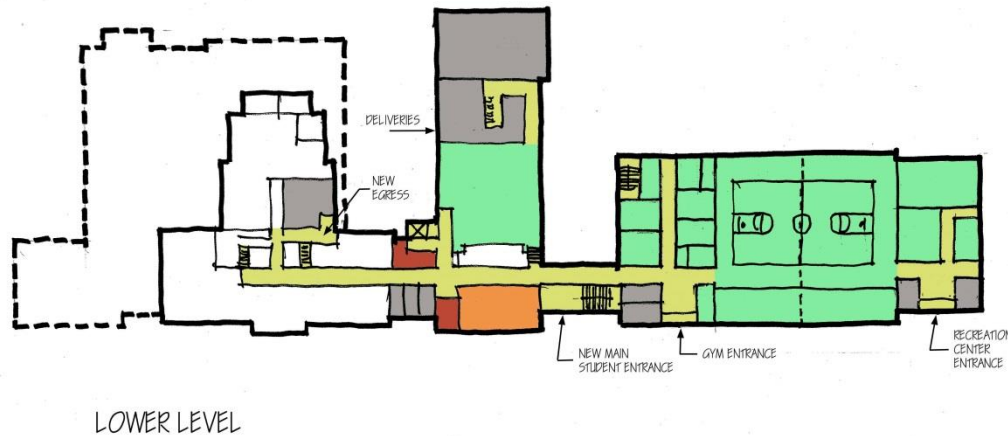
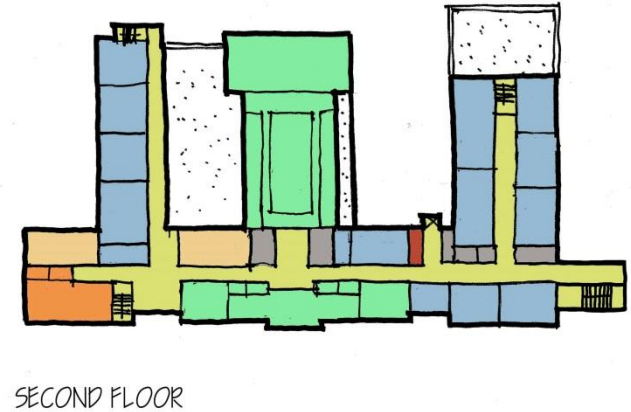
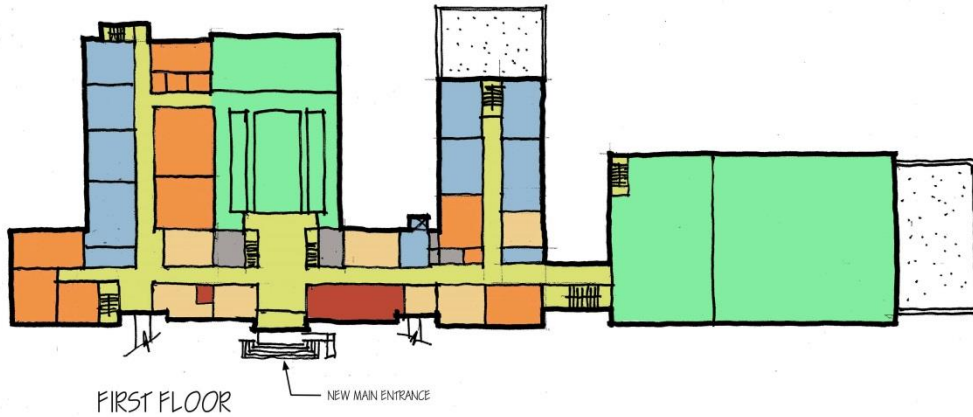
HAMPTON ACADEMY MIDDLE SCHOOL

SITE OPTION 3

SCALE: N.T.S.
DATE: 10/26/15
SHEET NO. PROJECT: 000



PLAN DIAGRAM 3



LEGEND

- ADMINISTRATION
- CLASSROOMS & INSTRUCTION
- SPECIAL EDUCATION CENTERS
- EDUCATION SUPPORT AREAS
- SPECIAL CLASSROOMS
- MAINTENANCE & FACILITIES SUPPORT
- CIRCULATION

HAMPTON ACADEMY MIDDLE SCHOOL

CONCEPTUAL PLAN DIAGRAM OPTION 3

SCALE: 1" = 30'-0"
 DATE: 11/03/15
 SHEET OF: 06/0031 - 002



OPEN DISCUSSION & QUESTIONS



